

Creating a System Five Training dataset

The following article provides instruction on how to create a Training dataset for System Five. A Training dataset gives you the ability to play around and get oriented with the software, without affecting your live system.

To make an updated Training directory (on your File Server) follow these procedures:

1. You will need to make a copy of your **System Five Live Data**. To do this, [Click here](#) .

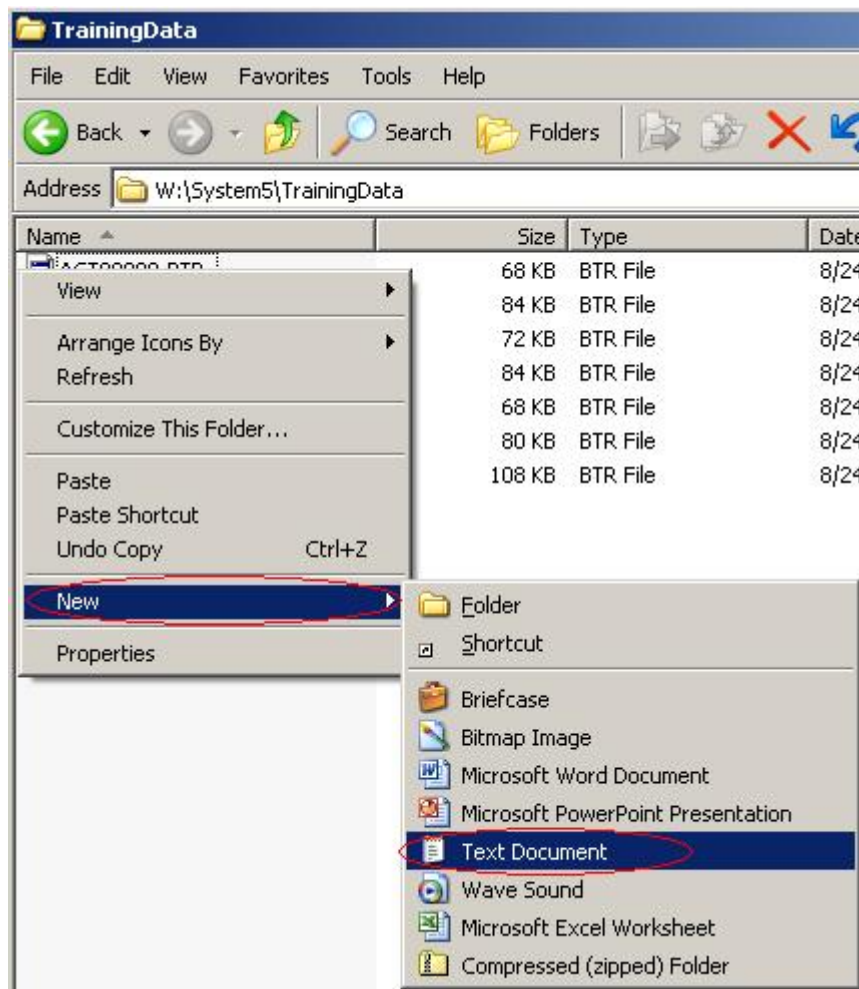
Note: Everyone will have to be logged out of System Five when making a copy of your data.

2. Once the dataset has been copied, right click the folder and select **rename**. **Rename** it to **TrainingData**.

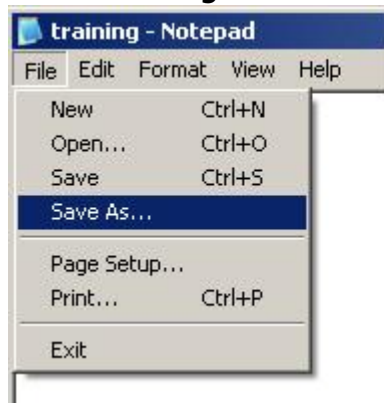


3. Once the **TrainingData** folder has been renamed, double click on it to enter it.

4. In the **TrainingData** folder, **right click** on the whitespace, and select **new → text document**.
[External Link](#)



5. Name this text document, **training** and open it. Once opened, go to **File → Save As** and **save** the file as **Training**.



6. You should now have a **Training** file, in your **TrainingData** folder. Once this has been completed,

you will need to link System Five to this dataset.

7. Open up System Five and select the option to **Install**. If the **Install** option is not available, select **Link a new workstation to an existing company**.

8. Select the path of your **TrainingData** folder. Typically it would be **W: → System5 → TrainingData**.

9. When the **TrainingData** folder has been selected, click **Next** and you will see your **Company Name**. Verify this line is highlighted and click **Next** again.

10. At this point, you will be presented with available terminals. Select any terminal and click **Next**.

11. After selecting your terminal, click **Next** and **finish**. You have successfully created a Training dataset, and linked to it as well.

From:

<https://wiki.windwardsoftware.com/> - Windward Software Wiki

Permanent link:

https://wiki.windwardsoftware.com/doku.php?id=create_a_training_dataset

Last update: **2010/08/20 15:02 (14 years ago)**

