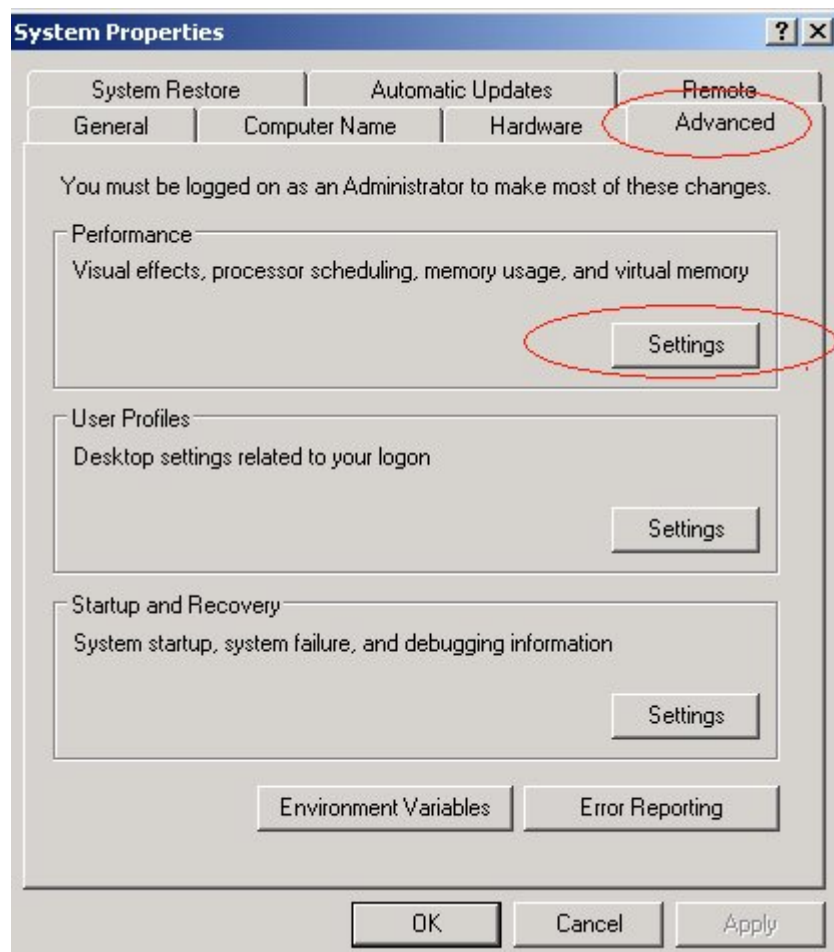


Data Execution Protection is a feature of Windows XP SP2, Windows 2003 Server SP1 and all 64-bit editions of Windows. Its purpose is to help prevent damage to your system through viruses and other malicious programs by disabling their access to memory locations that only Windows and other programs should be allowed to use.

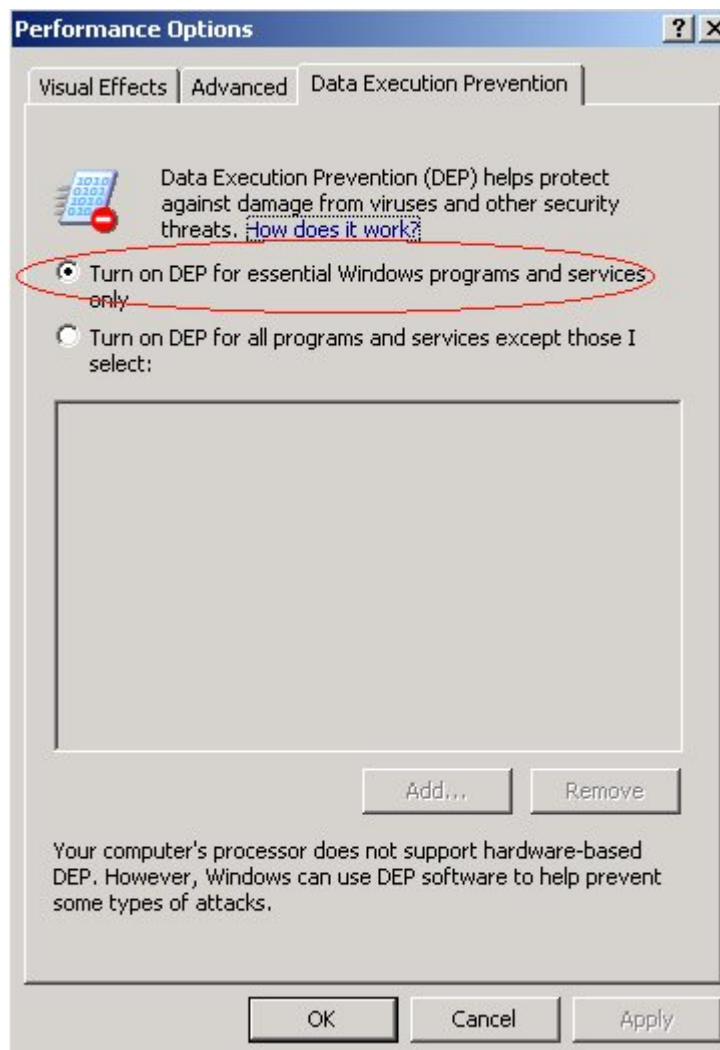
When DEP is enabled on a computer, it may interfere with System Five, S5Poll, or S5Standalone if the company uses the multi-currency feature.

The default setting for DEP is on only for essential Windows programs and services. To make this change back to the default setting:

Open System Properties by clicking Start, click Control Panel, and then double-click System:



Click the Advanced tab and, under Performance, click Settings.:



Click the Data Execution Prevention tab and set to the default setting.

From:
<https://wiki.windwardsoftware.com/> - **Windward Software Wiki**

Permanent link:
https://wiki.windwardsoftware.com/doku.php?id=faq:unable_to_setup_multi-currency_dep_interferes_with_certain_system_five_features

Last update: **2007/03/08 12:09 (17 years ago)**

